

The Cathedral Star

October 2012

Vol. XIV • No. 2

Happy 160th Anniversary: Cathedral of the Assumption, 1852-2012!

**Second of Two Special Stewardship Editions!
Inside: Annual Report and Stewardship Intention Form**

Please cut out the Stewardship Intention form, fill out, and return by Intention Sunday, November 4th. A return envelope is also provided.

Pastor's Stewardship Letter

Be Known, Belong, Believe: The Cathedral of the Assumption, Where YOU can BE!

Dear Cathedral of the Assumption Parishioner,

We once again approach the time of year when we each are called to discern our stewardship support and participation in our Cathedral ministries. Stewardship is a response of gratitude on our part for the blessings God has given us. Here at the Cathedral of the Assumption one of the greatest blessings we share is that in our parish community we can be known, belong, and believe.

Being known is a hunger we all share. In a world of faces, we long to be recognized as someone of importance, someone with dignity, and someone worth loving. Created by God we are all of these things and more, and our Cathedral family is an expression of this recognition, a manifestation of God knowing us.

Belonging to something greater than ourselves is another hunger of our hearts. We are not created to go it alone, we are created for one another. Our Cathedral parish is a family within which we can covenant with God and one another to become something collectively greater than we are alone.

Finally, we hunger to believe in something, we hunger to believe in God. Our Cathedral parish is a blessing in that in this place, known and belonging, we can encounter Jesus Christ and grow in our belief.

We are blessed to be a part of the Cathedral family, and today I ask you to invest yourself anew in our family. Over the past year our parish staff and committees have been fiscally responsible in keeping expenses down, even as they have gone above and beyond in terms of their gift of time and effort. We have reduced our salary expenses by \$140,000 while still providing quality programming, worship, and community-building events. This has been a difficult task, yet we have worked very hard to successfully provide wonderful encounters with Christ while working within our personnel and fiscal means.

We are likewise blessed as a Cathedral family in that we enjoy beautiful facilities that have been improved through the Building A Future of Hope Campaign. We are without debt as a parish. And our worship remains outstanding expressions of our love for God and



continued on page 2

CATHEDRAL OF THE ASSUMPTION

433 SOUTH FIFTH STREET • LOUISVILLE, KENTUCKY 40202
Voice 502-582-2971 • Fax 502-582-3919 • www.cathedraloftheassumption.org

God's love for us. We are blessed to have all the advantages of following others who thought ahead and sacrificed so we might be able to tend to Christ's mission in our time.

Now the mission of Christ falls to those of us present here today, and it depends on our investment today. Now the opportunities for growth and enrichment, opportunities to feed the hungry and reach out to the marginalized, and opportunities to offer stellar worship of God depend on our investment. Now the one hundred and sixty year lineage of the Cathedral of the Assumption rests in our hands, and we are called to strengthen it for those who will follow us.

I urge you to choose to invest yourself in our Cathedral family!

Give of your financial resources so we can collectively meet the financial support necessary to pay for the many opportunities the Cathedral provides to be known, belong, and believe. Then you can say of yourself that you are a partner in our parish financial health.

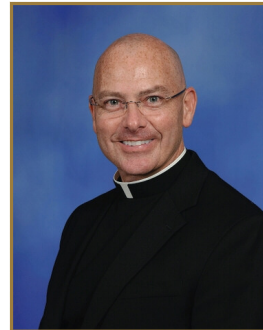
Give of your time to attend our worship, feed the hungry, and deepen your understanding of our faith. Then you can say of

yourself that you responded to Christ's call to follow him.

Give of your talents by sharing your giftedness and passion through one of our ministries or outreach. Then you can say of yourself that you made an offering of yourself back to God who blesses us.

Please invest yourself in our parish for we cannot grow as a community without your investment, but together we will grow in our encounters with Christ celebrating that we are known, belong, and believe.

This is the Cathedral of the Assumption, where YOU can BE.



Sincerely,

Fr. Jeff Nicolas, Pastor

Fiscal Year 2013 Budget

INCOME

Collections - 89%	\$983,110
Gifts & Bequests - 2%	\$20,000
Fund Raising - 2%	\$18,200
Diocesan Subsidy - 3%	\$38,250
Misc - 4%	\$45,842

TOTAL INCOME **\$1,105,402**

EXPENSES

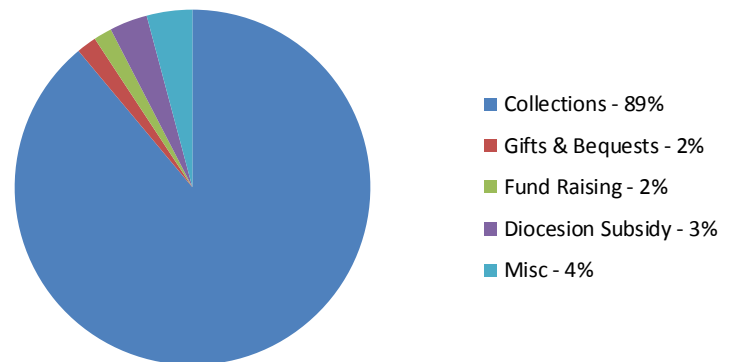
Salaries & Benefits - 52%	\$593,353
Programs - 15%	\$174,891
Charitable Donations - 2%	\$22,400
Plant & Mtn - 23%	\$258,306
Assessments - 7%	\$80,930
Misc - 1%	\$8,800

TOTAL EXPENSES **\$1,138,680**

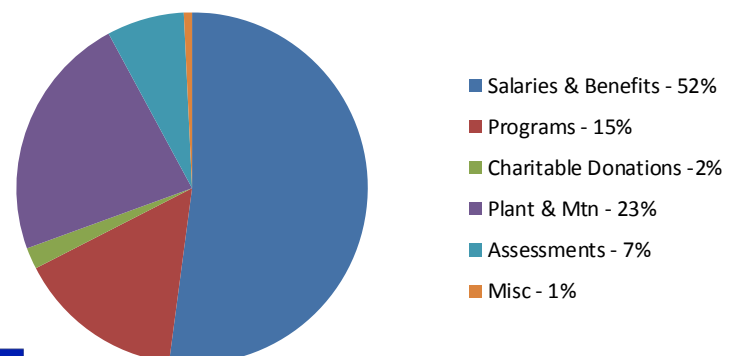
NET DIFFERENCE **(\$33,278)**

(July 1, 2012 - June 30, 2013)

FYE 2013 BUDGET INCOME



FYE 2013 BUDGET EXPENSES



2011—2012 In Review *(some highlights)*

We welcomed to the Cathedral

- Molly Chesney who serves as the Wedding Contact, Worship Assistant for Daily Mass, Lunch Volunteer Coordinator, Weekend Worship Bulletin Producer.
- Deacon Tom McNally who serves as the Lunch Program Chaplain and oversees the Cathedral's State ID Voucher program that is funded in part by a Louisville Metro Grant.
- Deacon Chris McDonell was ordained this August and has been assigned to the Cathedral. In addition to liturgical duties he shares with Deacon Stephan Phelps, Deacon Chris will oversee the Louisville Metro Grant that augments our daily lunch program.
- Mike Clark joined on as a Cathedral full-time maintenance employee; Brian Hommrich was hired to fill the part-time kitchen maintenance position.

Strategic Planning

- We spotlighted our various ministries, one week at a time, according to our major category division.
- Parish Conversations (6 of them) and Questionnaires —We shared what we value about the Cathedral and what we want to be as the Cathedral in the present, and our hopes and plans for the future.
- Parish Council members served as the scribes for the Conversations and read the questionnaire responses. The council is in process to articulate the goals and implement the action steps of the 3 year plan.

Formation

- Adult formation included 3 seasons of sessions of Why Catholic, Fr. Don Springman's series on the Old Testament, and a presentation on parenting.
- With our covenant churches, we had the blessing of the Animals last year and this; last January, there was an Epiphany Hop, viewing of Christmas decorations in the churches and refreshments.
- Our youth participated in Blanket Louisville, 30 Hour Famine, Vacation Bible School (with 4th Avenue Methodist).

Social Concerns

- In this general election year, there were voter registration drives in both the Spring and Fall.
- The Respect Life Committee hosted "The Last of Life for Which the First was Made" end-of-life discussion panel and light supper.
- Health Day for Lunch Program guests was offered by nursing student volunteers of Galen College.
- Work continues with our Sister Parish in Haiti, with parishioners traveling there throughout the year to update technology.

Parish Life

Yoga Classes were offered this Summer, and a flu shot clinic was hosted here last Fall. There were retreats for Parish Life, Compassion, and Prayer Ministry members.

Worship and Music

There was much preparation and education and, eventually, implementation of the New Roman Missal. The Cathedral Singers and Cathedral Choir joined for Advent Lessons and Carols on December 9. Father Jeff and the Worship Committee led a sharing and formation event for liturgical ministers.

Archdiocese of Louisville History Center

The rededication of The Archdiocese of Louisville History Center happened on October 16, 2011.

Capital Campaign Projects

New roof was installed on the historic Cathedral School Building (parish offices).

Awards

- Best of Louisville—Best Place to be Married, 2011
- Louisville Downtown Management District Cornerstone Award for the Renovation of the Cathedral Campus

Annual Report: Parish Statistical Information *(Fall 2011– Fall 2012)*

Parish Population	Full Member Households	1084
	Full Members	2233
	Associate Members Households	207
	Associate Members	480
Formation	Children and Youth in Religious Education	50
	Volunteer Catechists	10
	RCIA Candidates and Catechumens	5 last Fall; 10 this Fall
	Why Catholic Fall 2011, Spring 2012, Fall 2012	8 or 9 groups each session
	Fr. Springman, Introduction to the Old Testament	3 evening sessions
	5 Retreats	20-25 participants each retreat
Sacraments and Rites	Baptisms	15
	First Eucharist	13
	Confirmations	6
	Marriages	34
	Funerals	29



Groups and Events the Cathedral Welcomed This Year

Archdiocesan

Ordination of Priests in August 2011 and May 2012
Ordination of Deacons in August 2012
Chrism Mass
Rite of Election
Funeral of Archbishop Kelly
Syro-Malabar Rite Masses, twice/month
Pro-Life Mass, monthly
Archdiocese of Louisville Ministry Institute (ALMI) Limex Forum (Loyola Institute of Ministry Extension Program)
ALMI Social Justice Workshop
Archdiocese of Louisville History Center Rededication
Catholic Charities Immigration Workshops
Catholic Charities Prayer Service and Reception
Vocations Office - Monthly Discernment
Vocations Office Christmas Dinner
Vocations Office Dinner on Tuesday of Holy Week
Vocation Awareness Workshop
Annual Martin Luther King Celebration
Display of Office of Multicultural Ministry Altar of the Dead
Regional Deacons Meeting
Youth and Young Adult Respect Life Walk and Gathering
Catholic Education Foundation Reception
PCAL (Parish Councils of the Archdiocese) Meeting
Priests Jubilee Mass and Reception
Dinners with Archbishop Kurtz with priests of the diocese
Archbishop Kurtz's anniversary Mass and Dinner

Confirmations

St. Martha
South End Parishes
St. Bartholomew, St. Pius, St. Barnabas
Germantown Parishes
St. Agnes
St. Rita

Educational Program for 2nd and 3rd grade classes of the Archdiocese (tour of Cathedral, learning about the poor and the daily lunch program at the Cathedral) coordinated by parishioners Bob and Judy Silva

St. Athanasius
St. Albert the Great
Sacred Heart Model School
St. Michael
St. Aloysius
Our Lady of Lourdes
St. Agnes
St. Margaret Mary
St. Patrick

St. Leonard
Holy Trinity
St. Nicholas

Tours of Cathedral and/or History Center

St. Margaret Mary 7th Grade
Atherton High School Tour
Jeffersontown High School Tour
Spalding University Class tour
UofL Spirituality in Social Work Class
St. Dominic School tour
Holy Family School, Louisville
Holy Family School, New Albany
St. Patrick RCIA
St. Martha Confirmation Class
St. Agnes Confirmation Class
Cincinnati YMCA Seniors
Community Children's Day Care
Young Catholic Adults

Other

Queen's Daughters Rosary, Mass, Brunch
Quest Leadership Program for Young Women
St. Agnes Faculty Planning Day
St. Martin of Tours Staff Planning Day
St. Martha
Annual Mass and Reception for Standard Gravure Victims, Families, and Friends
Vespers, St. Meinrad Alumni
Canaan Christian Prayer Services, weekly
Cookouts for the homeless—St. Albert the Great Youth, monthly; Legal Secretaries, annually; Deacon Pat Wright, friends and family, throughout the year
AA, weekly
Louisville Master Chorale Practice, weekly
Louisville Master Chorale Performances
University of Notre Dame Women's Liturgical Choir
Notre Dame Academy Choir
Presentation Academy Ring Ceremony
Presentation Academy Baccalaureate Mass
DeSales High School Baccalaureate Mass
St. Xavier Seniors and Moms Mass
School Choice Workshop
St. Ann's Confraternity Mass and Breakfast
National or Regional Events
Festival of Young Preachers
National Pastoral Musicians Convention
National Association of Hispanic Priests Convention



Annual Report: Operating Income Statement

INCOME	Fiscal Year Ending 06/30/12			Year-vs-Year		
	Actual	Budget	Better (Worse)	2011-12	2010-11	Better (Worse)
Collections	958,557	1,110,000	(151,443)	958,557	1,122,934	(164,377)
Social Concerns	81,342	48,000	33,342	81,342	56,350	24,992
Gifts & Bequests	27,827	20,600	7,227	27,827	53,898	(26,071)
Fundraising	938	0	938	938	(100)	1,038
Diocesan Subsidies	38,250	38,250	0	38,250	38,250	0
Interest	178	300	(122)	178	273	(95)
Miscellaneous	51,646	49,050	2,596	51,646	47,723	3,923
A						
Total Income	1,158,738	1,266,200	(107,462)	1,158,738	1,319,328	(160,590)
EXPENSES						
Administration						
B	306,939	332,353	25,414	306,939	312,646	5,707
Worship/Music	215,694	234,731	19,037	215,694	248,070	32,376
Parish Life	77,753	99,780	22,027	77,753	87,050	9,297
Formation	58,701	134,867	76,166	58,701	136,178	77,477
Social Concerns	101,020	108,072	7,052	101,020	96,186	(4,834)
Charitable Donations	20,244	22,400	2,156	20,244	22,478	2,234
Plant/Maintenance	250,988	254,307	3,319	250,988	252,825	1,837
Diosesan Assessments	83,025	83,005	(20)	83,025	94,087	11,062
Non-Parish Collections	24,940	25,050	110	24,940	23,615	(1,325)
C						
Miscellaneous	32,973	8,800	(24,173)	32,973	41,791	8,818
D						
Total Expense	1,172,277	1,303,365	131,088	1,172,277	1,314,926	142,649
Net Surplus or Deficit	(13,539)	(37,165)	23,626	(13,539)	4,402	(17,941)

Explanations

- A.** Rental income, Mass income, religious education fees, Chancery and Center for Interfaith expense recoveries, etc.
- B.** Includes staff salary and benefits.
- C.** Peter's Pence, Catholic Charities, Retired Religious, etc.
- D.** Chancery and Center for Interfaith expense (see note above for recovery of expense), etc.



Parish Council

Chair:
Rick O'Daniel-Munger, rodanielmunger@humana.com

Vice Chair:
Kim Crum, kimberly.g.crum@gmail.com

Pastor:
Fr. Jeff Nicolas

Administration /Finance Rep: Tom Zimmerman

Formation Representative: Carollynn Hall

Stewardship Representative: Dottie Wyman

Social Concerns Representative: Kim Crum

Parish Life Representative: Don Kavanugh

Worship Representative: Paul Najjar

Staff Representative: George Kaissieh

Center for Interfaith Relations Rep: Paul Kelty

At-Large Representatives:

Jack Lydon

Bob Silva

Leslie Smart

John Smart

Eric Thorne

Secretary (non-voting): Angela Wiggins

Parish Staff

Pastor:
Fr. Jeff Nicolas,
frnicolas@cathedraloftheassumption.org, 582-2971

Deacons:
Stephan Phelps
sphelps@cathedraloftheassumption.org, 657-5240

Chris McDonell
cmcdonell@cathedraloftheassumption.org

Pastoral Associate:
George Kaissieh
gkaissieh@cathedraloftheassumption.org, 657-5271

Parish Nurse:
E. A. Cole
ecole@cathedraloftheassumption.org, 657-5702

Director of Music:
Dr. Philip Brisson
pbrisson@cathedraloftheassumption.org, 657-5220

Director of Contemporary Music:
Larry Love
llove@cathedraloftheassumption.org, 657-5228

**Lunch Program Volunteer Coordinator/
Wedding Contact/Public Relations:**
Molly Chesney
mchesney@cathedraloftheassumption.org, 657-5211

Business Manager:
Annette Roberts
aroberts@cathedraloftheassumption.org, 657-5214

Accounting Associate:
Marsha Benedetti

Bookkeeper:
Ed Veeneman

Facilities Manager:
Ken Garrett
gkarrett@cathedraloftheassumption.org, 657-5221

Maintenance:
Derek Shontee and Mike Clark, 657-5221

Kitchen Maintenance:
Brian Hommrich

Secretary/Receptionist:
Marsha Kahl
mkahl@cathedraloftheassumption.org, 657-5201

Executive Assistant:
Angela Wiggins
awiggins@cathedraloftheassumption.org, 657-5213

Kitchen Manager:
Steve Lee
slee@cathedraloftheassumption.org, 657-5226

Nursery Caregivers:
Carolyn Logsdon and Patricia Reed

In addition:

◆ **Lunch Program Chaplain**
Deacon Tom McNally

◆ **Wedding Liturgy Planner**
Maggie Cyphers
mcyphers@cathedraloftheassumption.org

◆ **Children's Religious Education Ambassador**
Dottie Wyman

◆ **Adult Formation Program**
Fr. Don Springman, Deacon Lucio Caruso

◆ **Youth Program**
Joan Huber





Cathedral of the Assumption Stewardship 2013

Dear Cathedral Parishioners,

Please fill out both sides of this form and return it in the envelope provided on **Commitment Weekend, November 3/4**, or as soon as possible after that. **Even if you wish to change nothing from last year's response, please return your form for our parish records.** Thank you for your timely response.

Parishioner Information - To keep our files current, please fill in any pertinent information for household members who are active parishioners at the Cathedral. There are times when e-mailings can be used to save paper, postage, and time, so if you regularly check your e-mail, please make sure we have your e-mail address.

Name	Birth Date	Phone (home)	Phone (work or cell)	E-mail Address

Treasure

In prayerful thanksgiving for the many blessings received from God, I/we commit to the Cathedral of the Assumption a proportional amount of my/our income for 2013: \$____/week **or** \$____/month.

Automatic Bank Withdrawal - Electronic Transfer of Stewardship is available.

If you are interested in more information, please check here. _____

For currently Automatic Bank Withdrawal users - Beginning January 1, 2013, I/we wish to contribute:

\$____/week **or** \$____/month to be withdrawn ____weekly ____mid-month ____end of month.

Signature _____ **Date** _____

Planned Giving

The Bishop Flaget Society is an association of men and women whose generous gifts to the Cathedral of the Assumption will help to endow the tradition of outreach to the community, the mission of service to those in need, and the liturgical, spiritual and educational ministries begun by Bishop Benedict Joseph Flaget.

____ I am already a member of the Bishop Flaget Society.

____ I have already included the Cathedral in my estate plans; enroll me as a member in the Bishop Flaget Society.

____ Please have a member of the Bishop Flaget Society Committee contact me with more information.



Stewardship 2013 Ministry Opportunities Available at the Cathedral of the Assumption

Worship

- W 1. Altar Server
- W 2. Cross Bearer/Candle Bearer
- W 3. Minister of Holy Communion – Weekend
- W 4. Minister of Holy Communion – Weekday
- W 5. Lector – Weekend
- W 6. Lector - Weekday
- W 7. Minister of Hospitality – Weekend
- W 8. Minister of Hospitality – Weekday
- W 9. Sacristan – Weekend
- W 10. Sacristan - Weekday
- W 11. Liturgical Minister for Funerals
- W 12. Art & Environment
- W 13. Cathedral Choir
- W 14. Cathedral Singers
- W 15. Cathedral Cantors – Weekend
- W 16. Cathedral Cantors – Weekday
- W 17. Music Department Administration

Parish Life

- P 1. Parish Life Committee
- P 2. Docents for Cathedral & History Center
- P 3. Bereavement Committee
- P 4. Compassion
- P 5. Ministry to Sick & Homebound
- P 6. Ministry to Hospitalized
- P 7. Parish Newsletter
- P 8. Photography & Videography
- P 9. Parish Health Ministry
- P 10. Prayer Ministry
- P 11. Prayer Shawl Ministry

Social Concerns

- C 1. Lunch Program Support
- C 2. Community Outreach
- C 3. Global Outreach (Sister Parish, etc.)
- C 4. Faithful Citizenship
- C 5. Social Justice Formation
- C 6. Special Collections (items for charity)
- C 7. Communications

Administration & Finance

- A 1. Parish Office
- A 2. Parish Council
- A 3. Building and Grounds
- A 4. Church Cleaning
- A 5. Special Event Set-up/Clean-up
- A 6. Special Services (specify below)

Formation

- F 1. Encompasses Infant Baptism preparation classes, Children’s Liturgy of the Word, Children’s Religious Education, Youth Ministry, Sponsor Couple Marriage Preparation, Tri-Covenant Committee
- F 2. Art and Soul (weekly spirituality through art class)

Stewardship

- S 1. Encompasses Stewardship Committee, Planned Giving Committee, and Parish Pals

Time and Talent Please write each selected ministry # from above in the appropriate box below.

Name of Parishioner	New to this ministry	Continuing with this ministry	Leaving this ministry

Please write any comments or special talents you wish to offer: